

SOUTH DAKOTA **DAIRY JUDGING** GUIDE

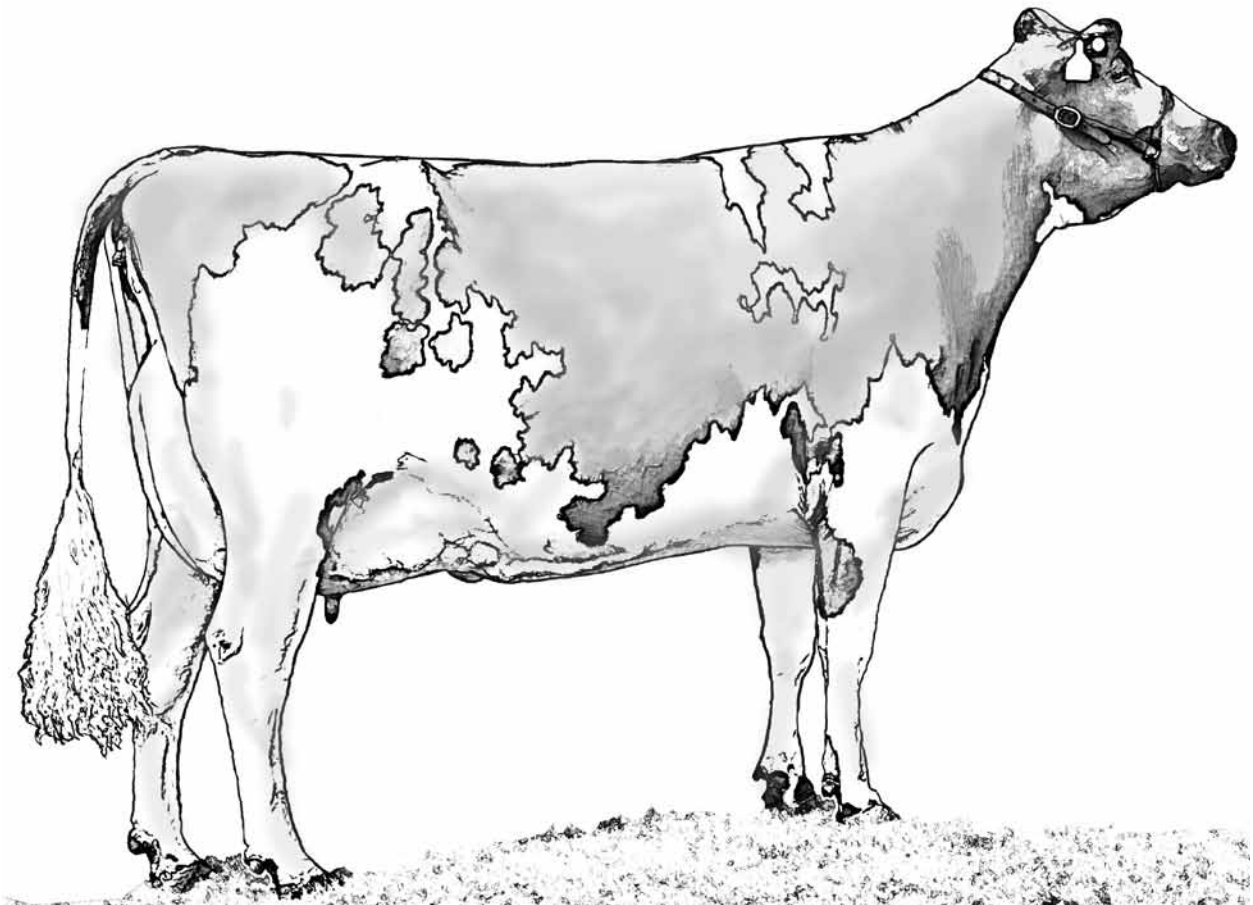


TABLE OF CONTENTS

I. Your South Dakota State Dairy Judging Contest Cards.	1
Class placing	1
Oral reasons.	2
Check type/ questions reasons.	2
II. Developing a System to Evaluate Dairy Cattle	3
III. Parts Identification.	3
Cow body part identification chart	3
IV. Purebred Dairy Cattle Association Unified Scorecard.	4
* Section includes photos of trait descriptions	
1) Frame.	4
2) Dairy character	5
3) Body capacity	5
4) Feet and legs	6
5) Udder.	7
V. Other Factors to Evaluate	8
VI. Breed Characteristics and Descriptions	9
* Section includes photos of each breed	
VII. Organization and Format for Note Taking.	11
Completed notes and reasons example.	12
VIII. Terminology for Oral Reasons	13

Author: Ann Price, Extension Educator-Livestock; Hand County

Reviewers: Rodney Geppert, Youth Livestock Project Leader
Tracey Renelt, Extension Educator-Livestock; Kingsbury County

Contributors: Kimberly McGraw, Extension Educator-Agronomy; Clark County
Mark Rowen, Extension Educator-4-H/Youth Development; Lincoln County

References for this guide include:

- “Judging Dairy Cattle.” University of Minnesota, July 2000.
- Purebred Dairy Cattle Association unified scorecard.
- Holstein Association USA, Inc.’s Linear Classification System (pictures in the PDCA Unified Scorecard section).
- “Judging Guide.” Hoard’s Dairyman, 2007.
- “Tips for Improving Oral Reason Scores.” 4HFAJ04. Debra Summerall, James Umphrey, and Russ Giesy. University of Florida Cooperative Extension Service.
- Georgia Agriculture Education Curriculum Office, University of Georgia.
- “Hand County (South Dakota) 4-H Livestock Judging Manual.”

Access at <http://agbiopubs.sdstate.edu/articles/4HYD429.pdf>.

South Dakota State University, South Dakota counties, and U.S. Department of Agriculture cooperating. South Dakota State University is an Affirmative Action/Equal Opportunity Employer and offers all benefits, services, education, and employment opportunities without regard for race, color, creed, religion, national origin, ancestry, citizenship, age, gender, sexual orientation, disability or Vietnam Era Veteran Status.
4HYD429: XXX copies printed at a cost of \$X.XX each. June 2009

I. YOUR SOUTH DAKOTA STATE DAIRY JUDGING CONTEST CARDS

Figure 1 represents an example of the type of placing cards contestants in the South Dakota Dairy Judging Contest will receive. Contestants register for the contest through their local Extension office. Once contestants are preregistered, the cards will be individualized for each and printed. When you receive your cards, they should contain the information that is below:


1. This is the **contest name**. Depending on your age level, it will read Beg., Jr., or Sr. Dairy Judging.
2. This **barcode** is used for scoring purposes. Please make sure you do not write on, scribble over, staple over, or

in any way damage the bar code. If you accidentally do damage the barcode, please notify one of the contest helpers right away.

3. This is the **contestant name and number**. Please make sure when you get your cards that the name and number in this location is the same on every card.
4. This is the **class number and name**. This will vary on each card, depending on the classes being judged.
5. This is the **county and team name**. Make sure this is the correct information as well.
6. This is the **contestant level and assigned group**. Make sure the contestant level matches your level. You do not need to do verify the assigned group information.

Figure 1. Placing card

1 Contest Name: Sr Livestock Test

2 

3 Contestant Number: 101c
Brown, Don

4 Class Number: 001
Class Name: Market Steers

5 County Name: AUR Aurora
Team Name: Aurora

6 Contestant Level: Sr Assigned Group: C2-101c

7


A - 1234	G - 2134	M - 3124	S - 4123
B - 1243	H - 2143	N - 3142	T - 4132
C - 1324	I - 2314	O - 3214	U - 4213
D - 1342	J - 2341	P - 3241	V - 4231
E - 1423	K - 2413	Q - 3412	W - 4312
F - 1432	L - 2431	R - 3421	X - 4321

Class placing

7. This section is where you mark your class placing. Circle the letter and all 4 of the numbers of how you wish to place the class. Example: If you want to place the class 3412, make sure to circle both the letter “Q” and the 4 numbers behind the letter: Q - 3412 If you change your mind about your placing, clearly erase the incorrect placing and circle the new placing; make sure the score keepers can tell which answer is your choice. If necessary, write your placing at the bottom of your card.

As soon as you receive your packet of cards, make sure that all of the information is the same on every card. If it is not, notify a contest helper immediately. **Do not wait until the judging begins to tell somebody about the problem.**

Figure 2. Oral reasons card


Contest Name: Sr Livestock Test	
	Contestant Number: 101c Brown, Don
Class Number: 002	Class Color
Class Name: Market Steer Reasons	
Team Name: Aurora	
Score: _____	
<small>ScoreCard by C & K Ventures - 307-742-3232</small>	

Oral reasons

Figure 2 represents the card given to the oral reasons takers when you give your reasons. You need to make sure the information on the top of the card is correct and matches the rest of your cards. **Make sure you give the reasons taker the right card for the class of reasons you are giving, especially if you must give more than one set of oral reasons.**

For the South Dakota Dairy Judging Contest, beginners will not be asked to give oral reasons. They will do check type reasons or be asked a series of questions. They will use a different style card, which is illustrated in figure 3.

Figure 3. Questions card

Contest Name: NE Training	
	Contestant Number: 103a Rabbit, Roger
Class Number: 004	
Class Name: Market Lamb Questions	
Team Name: Aurora	
Q Num	Answer
1	[1][2][3][4][Y][N]
2	[1][2][3][4][Y][N]
3	[1][2][3][4][Y][N]
4	[1][2][3][4][Y][N]
5	[1][2][3][4][Y][N]
<small>ScoreCard by C & K Ventures - 307-742-3033</small>	

Check type/questions reasons

Figure 3 represents the card to be used by Beginners for their questions class(es). You need to make sure that the information on the top of the card is correct and matches the rest of the card. **Make sure you use the correct card for the class of questions you are being asked, especially if you have more than one class of questions.**

The single number in the left hand column is the number of the question. The bracketed numbers, [1] [2] [3] [4], in the row represent the animals in the class. To mark your card, circle the number that corresponds to the animal you believes answers the question the best. There may be more than one animal that fits the question, so it is acceptable to circle more than one number.

II. DEVELOPING A SYSTEM TO EVALUATE DAIRY CATTLE

Each time you judge a class of dairy cattle or analyze a group of dairy cattle, you should rely on a system of observing the animals.

1. Stand back. Allow enough room between yourself and the animals so that you can see all of the animals at one time. This allows you to make better observations concerning the class.
2. Three angles. Try to look at the class from the side, the rear, and the front. You should compare each animal to the others in the class and to the “ideal” animal you have pictured in your mind.
3. “Big things” place the class. Always look for and analyze both the good and the bad characteristics of each animal. Make sure you place the class according to the big things. For example, a cow without median suspensory ligament support should be placed lower than a cow that has too much slope from her hooks to her pins.

III. PARTS IDENTIFICATION

In order to be a good dairy cattle judge, it is critical to know the correct location of body parts. In addition to the cow body part identification chart in fig. 4, there are a variety of virtual tools available on the Internet to help 4-H’ers learn parts identification.

The following site from the Georgia Agriculture Education Curriculum Office is interactive, user friendly, and made for 4-H’ers of all ages:

http://aged.ces.uga.edu/Games/Cow_Matching/cow_matching.swf

Just type the link into your Web browser, enter your name, and follow the directions to play.

Figure 4. Cow body part identification chart

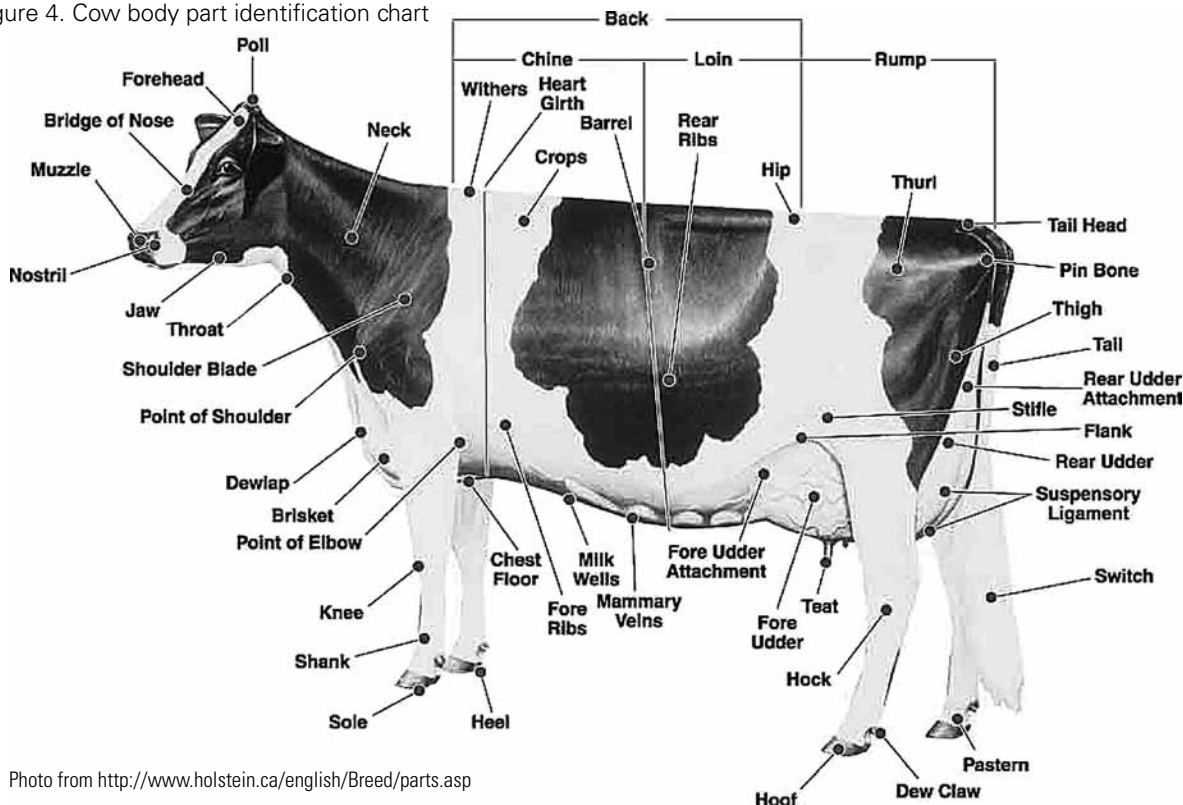


Photo from <http://www.holstein.ca/english/Breed/parts.asp>

IV. PUREBRED DAIRY CATTLE ASSOCIATION UNIFIED SCORECARD

The Purebred Dairy Cattle Association recognizes 5 major classification traits on which a classifier bases a cow's score. Each trait is broken down into body parts to be looked at and ranked. The descriptions of the traits to be considered are listed in order of priority:

1) Frame 15% 15 points

The skeletal parts of the cow, with the exception of feet and legs, are evaluated.

1. Rump (fig. 5) –

- Long and wide throughout, with pin bones slightly lower than hipbones.
- Thurls must be wide apart and centrally placed between the hipbones and pin bones.
- Tail head is slightly above and neatly between the pin bones, and the tail is free from coarseness.
- Vulva is nearly vertical.

2. Stature –

- Height, including length in the leg bones. A long bone pattern throughout the body structure is desirable. Height at the withers and hips should be relatively proportionate.

3. Front end –

- Adequate constitution with front legs straight, wide apart, and square placed.
- Shoulder blades and elbows need to be firmly set against the chest wall.
- Crops should have adequate fullness.

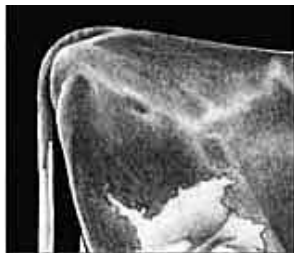
4. Back –

- Straight and strong with the loin broad, strong and nearly level.

5. Breed characteristics –

- Overall style and balance.
- Head should be feminine, clean cut, slightly dished with broad muzzle; large open nostrils and a strong jaw are desirable.

Figure 5. Dairy cow rump types



Pins higher than hooks



Slight slope from hooks to pins



Extreme slope from hooks to pins

2) Dairy character 20% 20 points

The physical evidence of milking ability is evaluated. Major consideration is given to general openness and angularity while maintaining strength, flatness of bone, and freedom from coarseness. Consideration is given to stage of lactation.

1. Ribs (fig. 6) –

- Wide apart. Rib bones are wide, flat, deep, and slanted toward the rear.

2. Thighs –

- Lean in curving to flat, and wide apart from the rear.

3. Withers –

- Sharp with the chine prominent.

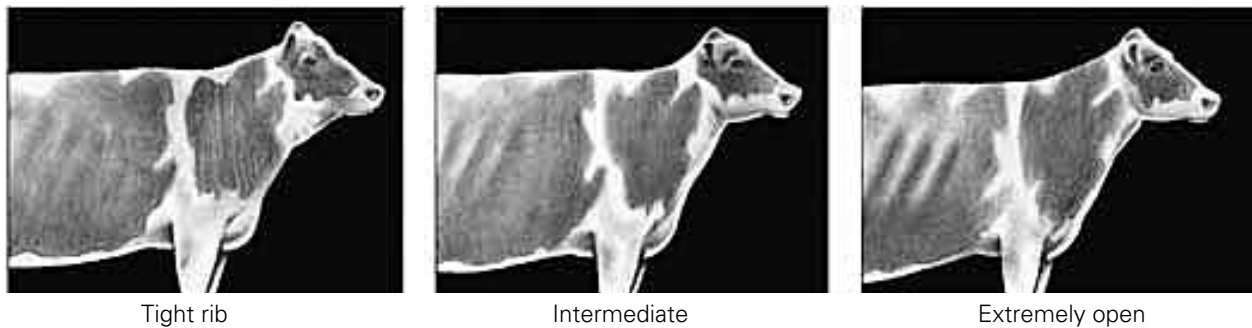
4. Neck –

- Long, lean, and blending smoothly into shoulders. A clean-cut throat, dewlap, and brisket are desirable.

5. Skin –

- Thin, loose, and pliable.

Figure 6. Dairy cow rib types



3) Body capacity 10% 10 points

The volumetric measurement of the capacity of the cow (length x depth x width) is evaluated with age taken into consideration.

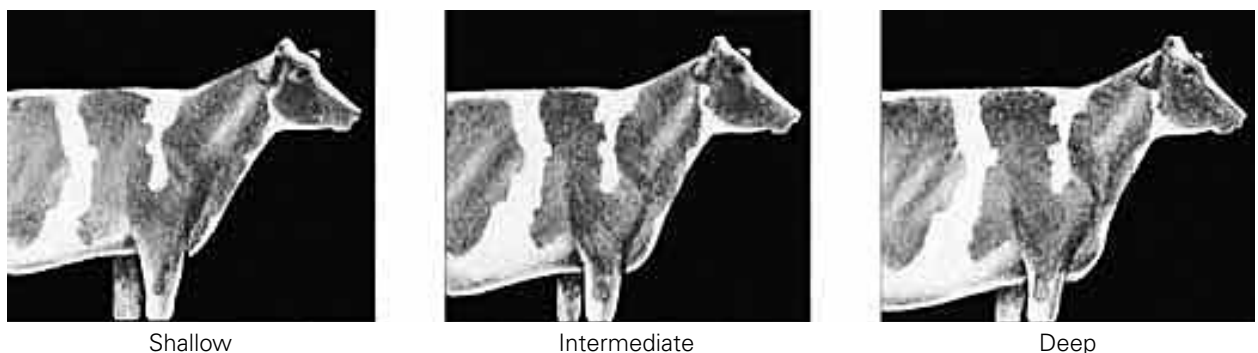
1. Barrel (given priority in body capacity) (fig. 7) –

- Long, deep, and wide.
- Depth and spring of rib increasing toward the rear with a deep flank.

2. Chest –

- Deep and wide floor with well-sprung fore ribs blending into the shoulders.

Figure 7. Dairy barrel types



4) Feet and legs15% 15 points

Feet and rear legs are evaluated. Evidence of mobility is given major consideration.

1. Feet (fig. 8) –

- Steep angle and deep heal.
- Short, well-rounded closed toes.

2. Rear legs, rear view (fig. 9) –

- Straight and wide apart, with feet squarely placed.

3. Rear legs, side view (fig. 9) –

- A moderate set (angle) to the hock.

4. Hocks –

- Cleanly molded.
- Free from coarseness and puffiness with adequate flexibility.

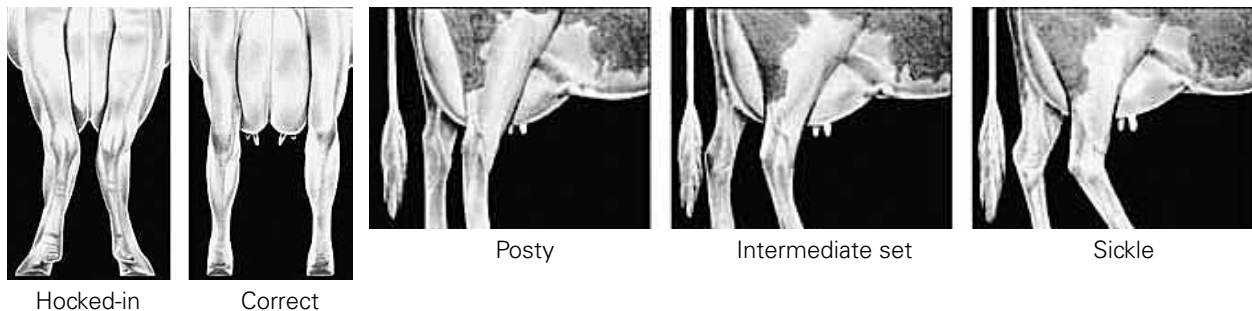
5. Pasterns –

- Short and strong with some flexibility.
- Slightly more emphasis placed on feet than on rear legs when evaluating this breakdown

Figure 8. Foot angle



Figure 9. Rear legs, rear and side view



5) Udder40% 40 points

The udder traits (fig. 10–13) are the most heavily weighted. Major consideration is given to the traits that contribute to high milk yield and a long productive life.

1. Udder depth –

- Moderate depth relative to the hock with adequate capacity and clearance. Consideration is given to lactation number and age.

2. Teat placement –

- Squarely placed under each quarter, plumb and properly spaced from side and rear views.

3. Rear udder (figs. 10 and 11) –

- Wide and high, firmly attached with uniform width from top to bottom and slightly rounded to udder floor.

4. Udder cleft –

- Evidence of a strong suspensory ligament indicated by adequately defined halving.

5. Fore udder (fig. 12) –

- Firmly attached with moderate length and ample capacity.

6. Teats (fig. 13) –

- Cylindrical shape and uniform size with medium length and diameter.

7. Udder balance and texture –

- Should exhibit an udder floor that is level as viewed from the side. Quarters should be evenly balanced, soft, pliable, and well-collapsed after milking.

Figure 10. Rear udder height

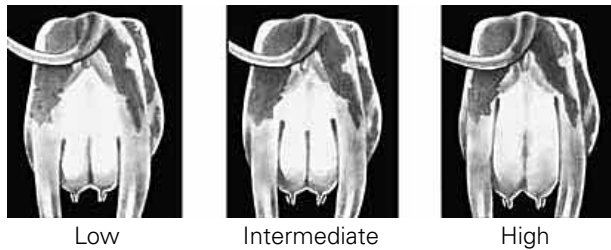


Figure 11. Rear udder width

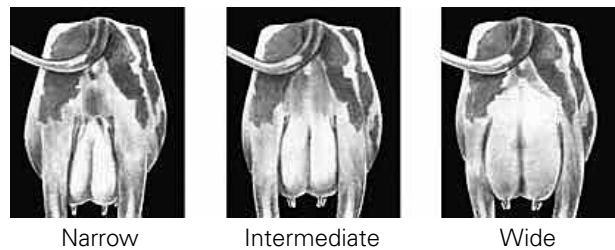


Figure 12. Fore udder attachment



Figure 13. Teat placement on udder



V. OTHER FACTORS TO EVALUATE

The degree of discrimination assigned to each defect is related to its function and heredity. The evaluation of the defect shall be determined by the breeder, the classifier, or the judge, based on the guide for discrimination and disqualifications given below.

Horns

No discrimination for horns

Eyes

Blindness in one eye: slight discrimination

Cross- or bulging eyes: slight discrimination

Evidence of blindness: slight to serious discrimination

Total blindness: disqualification

Wry face

Slight to serious discrimination

Cropped ears

Slight discrimination

Parrot jaw

Slight to serious discrimination

Shoulders

Winged: slight to serious discrimination

Tail setting

Wry tail or other abnormal tail settings: slight to serious discrimination

Capped hip

No discrimination unless affects mobility

Legs and feet

Lameness—apparently permanent and interfering with normal function: disqualification

Lameness—apparently temporary and not affecting normal function: slight discrimination

Evidence of crampy hind legs: serious discrimination

Evidence of fluid in hocks: slight discrimination

Weak pastern: slight to serious discrimination

Toe out: slight discrimination

Udder

Lack of defined halving: slight to serious discrimination
Udder definitely broken away in attachment: serious discrimination

Weak udder attachment: slight to serious discrimination

Blind quarter: disqualification

One or more light quarters, hard spots in udder, obstruction in teat (spider): slight to serious discrimination

Side leak: slight discrimination

Abnormal milk (bloody, clotted, watery): possible discrimination

Lack of size

Slight to serious discrimination

Evidence of sharp practice (refer to Purebred Dairy Cattle Association code of ethics):

Animals showing signs of having been tampered with to conceal faults in conformation and to misrepresent the animal's soundness: disqualification

Uncalved heifers showing evidence of having been milked: slight to serious discrimination

Temporary or minor injuries

Blemishes or injuries of a temporary character, not affecting animal's usefulness: slight to serious discrimination

Over-conditioned

Slight to serious discrimination

Freemartin heifers

Disqualification

VI. BREED CHARACTERISTICS

Except for differences in color, size, and head character, all breeds are judged on the same standards as outlined in the Unified Score Card. If any animal is registered by one of the dairy breed associations, no discrimination against color or color pattern is to be made.



Photo courtesy of <http://www.usayrshire.com/whyayrshire.html>

Ayrshire

Strong and robust, showing constitution and vigor, symmetry, style, and balance throughout, and characterized by strongly attached, evenly balanced, well-shaped udder.

Head – clean cut, proportionate to body; broad muzzle with large, open nostrils; strong jaw; large, bright eyes; forehead broad and moderately dished; bridge of nose straight; ears medium size and alertly carried.

Color – light to deep cherry red, mahogany, brown, or a combination of any of these colors with white, or white alone; distinctive red and white markings preferred.

Size – a mature cow in milk should weight at least 1,200 lbs.



Photo courtesy of http://www.holsteinusa.com/holstein_breed/breedhistory.html

Holstein

Rugged, feminine qualities in an alert cow possessing Holstein size and vigor.

Head – clean cut, proportionate to body; broad muzzle with large, open nostrils; strong jaw; large, bright eyes; forehead broad and moderately dished; bridge of nose straight; ears medium size and alertly carried.

Color – black and white or red and white markings clearly defined.

Size – a mature cow in milk should weight a minimum of 1,500 lbs.



Photo courtesy of <http://www.usjersey.com/images/Downloadpics.htm>

Jersey

Sharpness with strength, indicating productive efficiency.

Head – proportionate to stature showing refinement and well chiseled bone structure. Face slightly dished with dark eyes that are well set.

Color – some shade of fawn with or without white markings. Muzzle is black, encircled by a light colored ring, and the tongue and switch may be either white or black.

Size – a mature cow in milk should weigh about 900 lbs.



Photo courtesy of <http://www.milkingshorthorn.com/photos.html>

Milking shorthorn

Strong and vigorous but not coarse.

Head – clean cut, proportionate to body; broad muzzle with large, open nostrils; strong jaw; large, bright eyes; forehead broad and moderately dished; bridge of nose straight; ears of medium size and alertly carried.

Color – red or white or any combination. (No black markings allowed.)

Size – a mature cow should weight 1,400 lbs.



Photo courtesy of <http://www.brownswissusa.com/default.asp>

Brown Swiss

Strong and vigorous but not coarse. Size and ruggedness with quality desired. Extreme refinement is undesirable.

Head – clean cut, proportionate to body; broad muzzle with large, open nostrils; strong jaw; large, bright eyes; forehead broad and slightly dished; bridge of nose straight; ears medium size and alertly carried.

Color – solid brown, varying from very light to dark. Muzzle is black, encircled by a mealy colored ring; and the tongue, switch, and hooves are black.

Size – a mature cow in milk should weigh 1,500 lbs.



Photo courtesy of <http://www.usguernsey.com/printable.html>

Guernsey

Size and strength with quality and character desired.

Head – clean cut, proportionate to body; broad muzzle with large, open nostrils; strong jaw; large, bright eyes; forehead broad and slightly dished; bridge of nose straight; ears medium size and alertly carried.

Color – a shade of fawn with white markings throughout clearly defined. When other points are equal, clear (buff) muzzle will be favored over a smoky or black muzzle.

Size – a mature cow in milk should weigh at least 1,150 lbs.

VII. ORGANIZATION AND FORMAT FOR NOTE TAKING

Good judges can visualize a class of animals in their minds. In contests, several classes are judged in a short time, and oral reasons are given later. Therefore, it is necessary to take notes on whatever you observe about the animals in each class. Notes are to be used for study before giving oral reasons to the judge and should not be read to the reasons taker. A good set of notes should help you recall or make a mental picture of the class.

Take short, simple notes and form a habit of using terms with which you can easily make comparisons. List the main points first for each pair, and then add details or specific differences. In this manner, you will always have points to talk about on all 3 pairs.

Below is an example of a divided piece of paper for taking notes. The reasons can be made directly from the notes in a logical fashion—left to right and top to bottom. Use the example on the next page to help you develop a smooth-sounding set of reasons.

(Class number and name)	
(Brief description of each animal goes in these 4 boxes)	
(Opening statement)	(1st-place animal faults)
(Top-pair comparison)	(Top-pair grants)
	(2nd-place animal faults)
(Middle-pair comparison)	(Middle-pair grants)
	(3rd-place animal faults)
(Bottom-pair comparison)	(Bottom-pair grants)
	(Bottom-place animal faults)

Completed notes and reasons example

<i>Holstein 4-yr-olds</i>			
<i>1. Black w/ triangle on face, white strip on withers</i>	<i>2. Mostly white with spotted ribs</i>	<i>3. Mostly black w/ white above udder</i>	<i>4. Mostly white w/ big spots like my cow at home</i>
<i>Opening: 1 – most dairy character, depth, and balance.</i>		<i>Fault: 1 - shorter through neck than B.</i>	
<i>1/2 wider through front end deeper in fore and rear ribs. Wider through hooks and pins. More height in rear udder attach. Stronger, smoother fore udder attach; More correct feet and legs.</i>		<i>2/1 longer, cleaner neck. 2's faults: Narrower through hooks and pins; lesser rear udder attachment; shallow heel, weaker pasterns.</i>	
<i>4/3 biggest advantage is udder but otherwise close pair; more definition in med. suspensory lig; higher and wider rear udder; stronger fore udder; more dairy in rump and over tail head.</i>		<i>4/2 higher and wider rear udder; stronger pasterns and depth of heel. 4's faults: not as much dairy character as ones above her.</i>	
<i>4/3 biggest advantage is udder but otherwise close pair; more definition in med. suspensory lig; higher and wider rear udder; stronger fore udder; more dairy in rump and over tail head.</i>		<i>3/4 longer neck and body; sharper over withers. 3's faults: lacks overall sharpness and udder quality.</i>	

I placed this class of 4-year-old Holsteins 1243. 1 leads this class and easily places over 2 on her overall balance, depth, and dairy strength throughout. 1 is wider in her front end, deeper in bother her fore and rear ribs. 1 is also wider back through her hips and pins than 2. 1 has definite advantages in the udder, having more height and width of rear udder attachment, is also stronger and smoother in fore udder attachment. 1 excels 2 in leg structure, shows more correct set, strength of pasterns, as well as positioning of thurls. I do admit 2 is longer in the neck.

2 uses her sharpness and angularity, as well as her milky look to place over 4. 2 is sharper at the withers, longer in her neck and body, giving her a big advantage in overall dairyness. The udders are rather close; however, 2 has more venation and is more correct in rear teat placement. I grant 4 advantages in height and width of rear udder attachment, as well as strength of pasterns and depth of heel.

On a close placing, 4 places over 3, primarily on her udder. 4 is higher and wider in rear udder attachment; is stronger in fore udder attachment. 4 also has more definition of median suspensory ligament. Furthermore, 4 shows more dairy-ness through the rump region being sharper and more angular over the tail head. I grant 3 advantages in overall length. 3 is longer in her neck and body, appears sharper over the withers. However, 3 lacks overall sharpness, and udder quality to merit a higher placing. Thank you.

Reasons taken from Hoard's Dairyman Judging Guide, 2007 edition, Holstein class #3.

VIII. TERMINOLOGY FOR ORAL REASONS

In order to give a well-polished set of oral reasons, proper terminology must be used to compare and contrast the various strengths and weaknesses of the individual animals in a class. By using comparative terms instead of descriptive terms, oral reasons will sound more polished and delivery will be more fluid.

Comparative words generally end with an “-er” ending—e.g., wider, fuller, deeper, longer, shorter, narrower, taller, etc. The phrases “more” or “less” placed before a word also makes the word comparative instead of descriptive—e.g., “she had more spring of rib than the cow below her” vs. “she had the most spring of rib in the class.”

DAIRY CHARACTER

- More angularity
- More refined
- Cleaner and more angular
- Less excess flesh
- More openness of rib
- Longer and leaner neck
- Less fat about the neck, throat, and brisket
- Sharper at the point of withers
- More prominent about the vertebrae
- More well-defined over hip and pin bones
- More incurving in the thighs
- Cleaner in the hock
- More dairyness throughout
- Less excess conditioning
- Longer and more open
- More open in her conformation
- Less throaty
- Sharper over the shoulders
- Cleaner down the topline
- More prominent about the hips and pins
- Flatter (leaner or thinner) in the thighs
- Flatter boned
- Shorter, thicker neck
- Tighter, closer ribbed
- Throatier
- Thicker thighs
- Thicker, rounder shoulder
- Plainer

UDDER SUPPORT

- More youthful udder
- Udder carried higher off the ground
- Udder held tighter to the body wall
- More cleavage in rear udder
- Stronger center support in the udder
- Deeper cleft in the udder
- Stronger center attachment
- More cleft in the udder
- Fore udder held closer to the body wall
- More balance of udder
- Less quartering when viewed from the side
- Larger, more capacious udder
- More prominent veining
- More nearly level on the udder floor when viewed from the side
- Carries her udder higher above the hocks
- More distance between the hock and udder floor
- Stronger median suspensory ligament
- More clearly defined median suspensory ligament
- Deeper crease in her udder
- More clearly defined halving in the udder
- More crease in the udder
- More balance and symmetry to the udder
- Leveler on the udder floor
- More shapely udder
- Showing more bloom
- Appears to have less meatiness in the udder
- Exhibited more bloom and capacity of udder
- Has an advantage in stage of lactation with more bloom and capacity of udder
- Weaker attachments
- Less halving
- Lacks udder support
- Flatter on the udder floor
- Lacks a crease to the udder when viewed from the rear

TEATS AND TEAT PLACEMENT

- Teats more desirable in size, shape and placement
- Teats hang more perpendicular to the ground
- Teats more nearly in line (from rear)
- Teats more neatly set on the udder floor
- More nearly correct front teat placement
- More desirable teat shape
- Teats placed more correctly beneath each quarter
- More correct teat placement when viewed from the rear

REAR UDDER

- Higher in the rear udder attachment
- Higher and wider in the rear udder
- Stronger in the rear udder attachment
- More fullness to the rear udder
- More symmetry and balance of rear udder
- More shapely rear udder
- More height and strength of rear udder attachment
- Wider in the rear udder attachment
- Fuller at the top of the rear udder
- Fuller rear udder
- More balance of rear quarters
- More capacity of rear udder
- Light in the left or right rear quarter
- Lower in the rear udder attachment
- Weak and narrow in the rear udder attachment

FORE UDDER

- Fore udder blends more smoothly into the body wall
- Tighter fore udder attachment
- More firmly attached fore udder
- Longer, more tightly attached fore udder
- Less bulgy fore udder
- Snugger in the fore udder attachment
- Smoother fore udder attachment
- Stronger fore udder attachment
- Longer fore udder
- More capacity to the fore udder
- Loosely attached fore udder
- Bulgier appearing fore udder
- Deep in the fore udder
- Steeper in the fore udder
- Shorter in the fore udder
- Unbalanced fore udder
- Cut-up in the fore udder

FEET AND LEGS

- Straighter in her rear legs as viewed from behind
- Less set to the hock
- More set to the hock
- Cleaner hock
- Walks more freely on the rear legs
- Tracks straighter
- More correct foot shape
- More strength in the pasterns
- More refined hock
- Cleaner leg bone
- More strength and substance of bone
- More correct set to the hock
- Stands more squarely on her rear legs when viewed from the side
- Handles her rear legs more correctly on the walk
- Exhibits more mobility/more mobile
- Walks more correctly on her front feet
- Stronger in the pasterns
- Deeper in the heel
- More feminine and clean about the hock
- More flex of the hock and strength of pastern
- Shallow heel
- Post-legged
- Weak, refined, or coarse boned
- Weak pasterns
- Light-boned and lacking substance
- Thick in the hock
- Close at the hocks (cow-hocked)
- Toes out
- Stands too close at the hocks
- More coarseness at the hock
- Puffy about the hock

STATURE

- Taller, more upstanding
- More stature
- Taller front-ended cow
- Taller at the point of withers
- More height at the point of withers
- More upstanding in the front end

TOPLINE

- Straighter down her topline; especially harder in the loin (chine)
- More nearly level from withers to pins
- Stronger in the chine
- Leveler down the topline
- Straighter and stronger over the top
- Stronger in the loin
- Less strength of topline
- Easy over the topline
- Weak in the chine and crops
- Weak in the loin
- Weak over the topline

RUMP

- More nearly level from hooks to pins
- More correct slope from hooks to pins
- More smoothness through the rump
- Wider through the rump
- Higher in the thurls
- More correct tail head setting
- Neater at the tail head
- Flatter tail head setting
- Less slope from hooks to pins
- Longer and leveler from hooks to pins
- Wider in the pins (thurls or thighs)
- More width at the thurls
- Less prominent in her tail setting
- More correctly set tail head
- Tail head placed more neatly between the pins
- Thurls more centrally/correctly placed
- Shorter and narrower rump
- Higher and coarser at the tail head
- Narrow between the hooks and pins
- Higher at the pins
- More sloping in the rump
- Reverse tilt to the rump

FRONT END (SHOULDERS)

- Smoother blending shoulder
- Tighter in her shoulder structure
- Tighter at the point of elbow
- More harmonious blending through the front end
- Blending more smoothly into the fore rib
- Tighter at the point of shoulder
- Fuller at the point of elbow
- Fuller in the crops
- Less prominent at the point of elbow
- Coarser shoulder
- Looser shoulder
- More prominent at the point of shoulder
- Shallower shoulder lacking strength

HEAD

- More breed character about the head
- More dish to the face
- Stronger through the jaw
- More strength of muzzle
- Wider muzzle
- More femininity about the head
- More style about the head
- Cleaner, more refined head
- Deeper, stronger jaw
- More flare to the muzzle
- Plainier about the head
- Narrower in the muzzle
- Head lacks style and breed characteristics
- Coarser about the head
- Shorter and plainer about the head

BODY CAPACITY

- Stronger, more powerful cow
- More powerful through the front end
- More total body circumference
- More length of body
- Greater spring of rib
- More width and strength in the chest
- Stronger through the front end
- Fuller behind the shoulders
- Deeper in the chest
- Deeper in the rear rib
- Deeper in the flank
- More depth of fore and rear rib
- More strength and power
- More total cow
- More total body dimension
- Longer from end to end
- More spring of rib
- More width and strength throughout
- Wider through the chest floor
- Fuller in the crops
- Fuller in the heart girth
- Deeper in the barrel
- Deeper in the fore rib
- More depth of body
- Less spring of rib
- Narrower chest floor
- Narrower and more pinched in the heart
- Narrower, weaker and frailer

CONNECTING TERMS

- Furthermore...
- In addition to this...
- Equally as important...

- Yes, 2 is also...
- One also...
- More importantly...

- Moreover...
- I recognize that...

GRANTS

- I admit that 2...
- However, 2 has...
- I do realize...
- This is a close placing; however, because...

- I did see that 2 is...
- Noting that 2 is more...
- I grant that 2...
- I did not fail to recognize...
- Yes, I admit...

- I do concede...
- Giving 2 the advantage in...